



WINDOW COVERING AUTOMATION

By Linda Kolesar, ASID
Vintage House Interiors, Inc.

With a shout or a whisper, window treatments make a profound statement. Window fashions run the gamut from a minimalist approach to elaborate detailing for truly unique creations that delight the eye. Designers address issues of privacy, light and glare control and window dressing with characteristic style. Virtually unlimited fabric, trimming, and hardware options are combined to

Any window covering treatment can be motorized to provide clients maximum convenience.

Continued on Page 12



Privacy, light and glare control can all be managed with automated window covering controls.

Continued from Page 10

produce truly exceptional treatments. Greater consumer awareness leads to high expectations, especially in the luxury market.

An often overlooked tool in the designer's toolbox is the

emerging technology of window treatment automation. From elegant draperies to small window blinds, almost any type of window covering can be motorized, permitting easy opening of large, heavy draperies and hard

to reach blinds and simultaneous lifting of multiple shades. Bay window shades and wood blinds can be evenly raised with the push of a button. Opening the stage curtain as the lights are dimmed in a media room adds

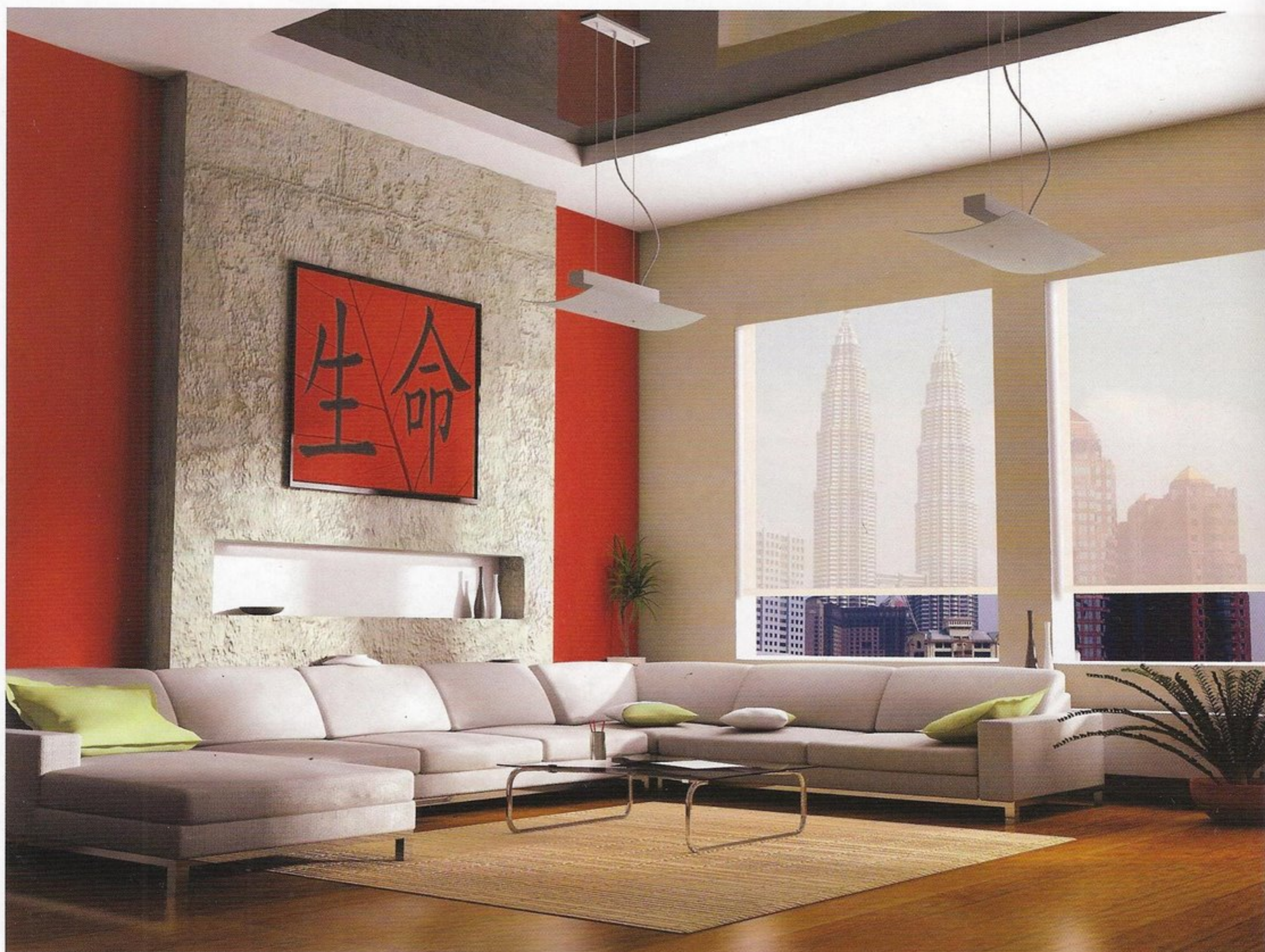
a dramatic flourish. Although automation is very appealing, the desire to use cutting-edge technology is often countered by fear of the unknown. Knowledge of a few facts about window covering motorization reduces any fear that may be associated with specifying these products.

Motor manufacturers provide a wealth of information for all possible applications. They can provide information about maximum and minimum rod sizes, the use of straight or curved rods and specialty products such as skylight coverage. Online and printed material is readily available to designers with the finer points of motorization. The cost of motorization varies with the particular motor selected. For instance, a Motor Drape Cord Drive system for up to 60 pounds of weight on a seven foot wide rod simply plugs into an outlet and has a suggested retail of \$890. Local distributors of this equipment are a valuable source of information.

Motors must meet three important specification criteria in order to do the job. 1. How heavy is the drapery? The motor must be strong enough to open or lift the window treatment. 2. How will the electrical connection be made? It may be as simple as plugging the motor cord into a standard electrical outlet, or as complex as wiring to an integrated smart system. 3. What device will control the motor? Options include a wall switch, different from a light switch, touchpad, radio frequency remote control, infrared remote control, or an integrated control device. For infrared, the remote control must aim at the eye, for radio frequency, no line of sight is required.

Other helpful tips include

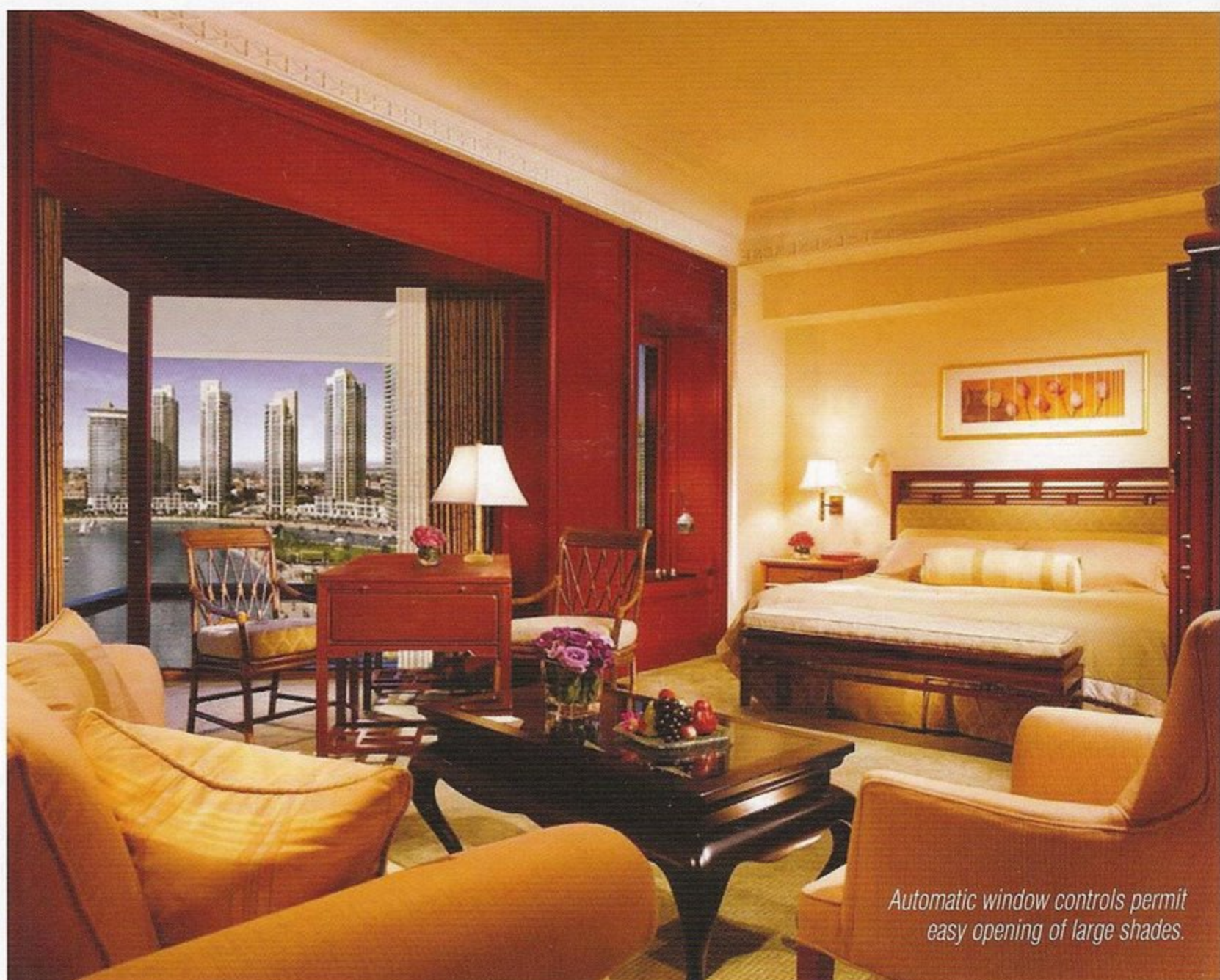
Continued on Page 14



Continued from Page 12

making sure there is a nearby electrical outlet for plugging in the motor. It's also a good idea to ask the supplier how much amperage the motor will pull. Note that the motor is attached to the rod, so the design solution needs to allow for it to be hidden from sight. Perhaps the single most important thing to insure success is to work with an installer who is experienced in motorization.

Beautifully designed window coverings catch the eye and help define the space. Incorporating appropriate technology into the window treatments increases owner satisfaction and reflects positively on the designer. It's a pleasure to provide *joie de vivre* with the touch of a button! **dd**



Automatic window controls permit easy opening of large shades.